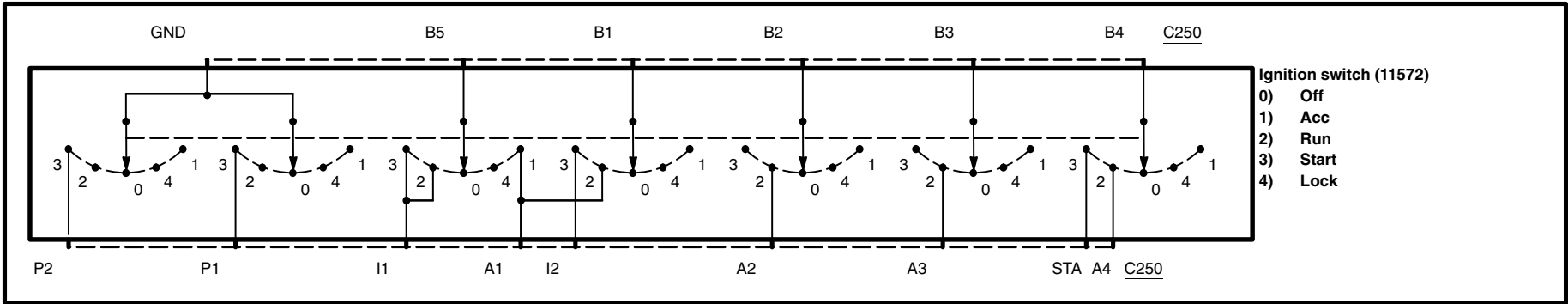


Ignition switch



Component testing procedure

Circuit to test	Connect self-powered test light or ohmmeter to terminals	Move key to these positions	A good switch will indicate
Run power circuit	B1 and A1 B2 and A2 B3 and A3 B4 and A4	Off/Lock	Open circuit
		Accessory	Open circuit
		Run	Closed circuit
		Start	Open circuit
Run/Start power circuit	B5 and I1	Off/Lock	Open circuit
		Accessory	Open circuit
		Run	Closed circuit
		Start	Closed circuit
Run/Acc power circuit	B5 and A1 B1 and A1	Off/Lock	Open circuit
		Accessory	Closed circuit
		Run	Closed circuit
		Start	Open circuit
Start power circuit	B4 and STA	Off/Lock	Open circuit
		Accessory	Open circuit
		Run	Open circuit
		Start	Closed circuit

Terminals

